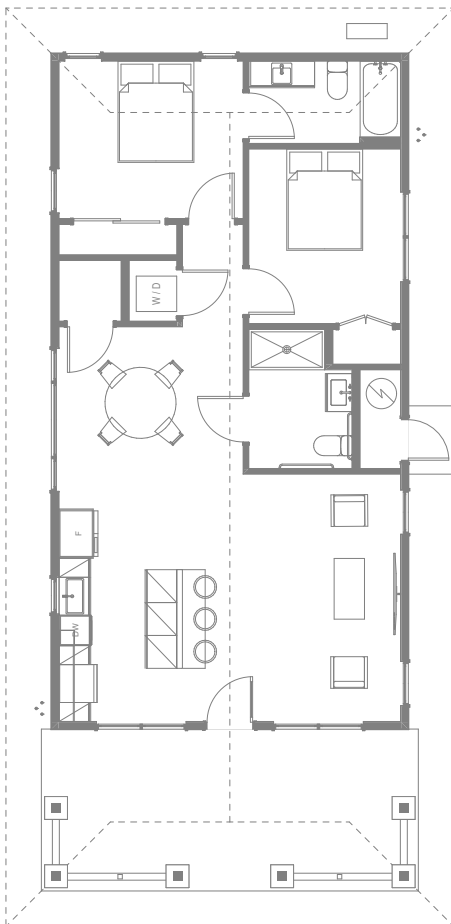


POLILAUAE

Poli (bosom, embrace) + laua'e (a fragrant native fern), "the embrace of the lau'ae fern."

2BR - 2BA - 1000-1200 SF



SPECIFICATIONS

Polilauae is a welcoming 2-bedroom, 2-bath home designed to feel familiar the moment you arrive. Named for “the embrace of the lau’ae fern,” the home reflects the warmth and comfort of traditional Hawai’i plantation houses through its approachable scale, inviting lanai, and recognizable roofline.

The layout prioritizes everyday livability, with spaces that feel connected, sheltered, and easy to inhabit. Natural light, simple circulation, and a compact footprint make Polilauae well suited for small families, kūpuna, or homeowners seeking a home that feels personal and grounded rather than oversized. Its design supports daily life without excess, creating a calm and reassuring place to return to.



AUKAHI

Aukahi “even, smooth, clear; united, flowing together.”

3BR - 2BA – 1000–1200 SF

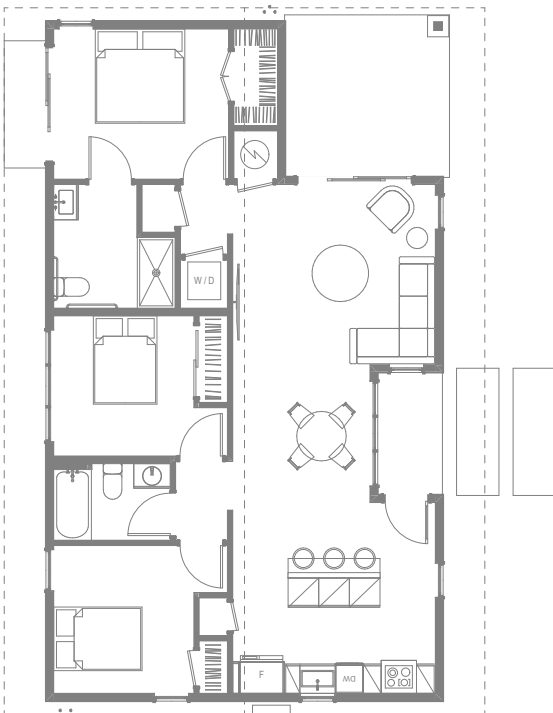


SPECIFICATIONS

Aukahi is defined by clarity, ease, and connection. Its name means “even” and “flowing together,” a concept reflected in a layout where spaces align naturally and movement through the home feels intuitive rather than forced.

The interior prioritizes efficiency without feeling tight. Living, dining, and kitchen spaces work together as a single, unified zone. Clean lines, straightforward geometry, and clear circulation makes the home equally well suited for families, shared households, or flexible living arrangements.

Aukahi supports modern life without excess. Its thoughtful proportions and cohesive layout creates an environment where everything has a place and works together as one.



MAKAHEHI

4BR - 2BA – 1000–1200 SF

Makahehi “admiration, wonder; something attractive or entrancing; a point where attention or movement becomes entangled.”

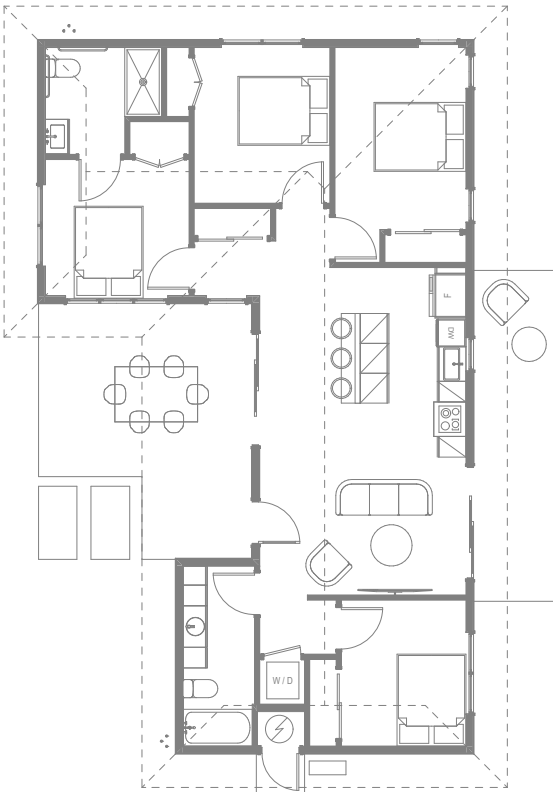


SPECIFICATIONS

Makahehi is designed as a place where movement, activity, and attention naturally come together. Its name speaks to attraction and convergence, and the plan reflects that idea by organizing the home around a central gathering space that draws daily life inward.

A generous entry lanai sets the tone, welcoming family and guests into a layout where living areas connect back to a common center. Bedrooms branch off this core, allowing privacy without disconnecting from the heart of the home.

Makahehi is well suited for larger families who value connection and shared experience. It is a home shaped around its piko, where people naturally gather and life moves together.



HUAPALA

Huapala “beloved companion,” “sweetheart,” “chosen partner.”

2BR - 2BA – 1200–1500 SF

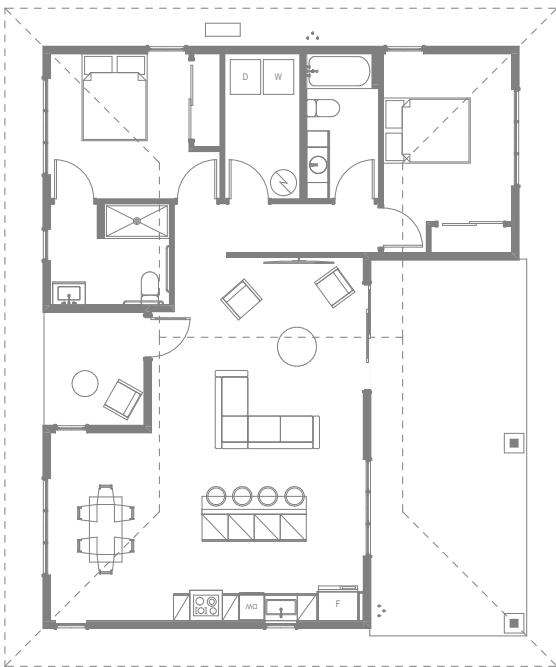


SPECIFICATIONS

Huapala is a 2-bedroom, 2-bath home designed for comfort, ease, and everyday companionship. Its name, meaning “beloved companion,” reflects a plan shaped around shared routines and a quieter pace of life rather than movement or scale.

The layout emphasizes spacious, well-proportioned rooms that feel relaxed and unhurried, with living areas arranged to support connection without crowding. Private spaces are comfortably separated, allowing the home to adapt naturally to daily rhythms, hosting, or quiet time together.

Huapala supports a settled way of living rooted in familiarity and care. It is a home intended to be shared, lived in fully, and grown into alongside someone valued—steady, welcoming, and distinctly personal.



‘ŌIWINANI

‘Ōiwi (native, form) + nani (beautiful), “a beautiful form” or “a native shape of beauty.”

3BR - 2BA – 1200–1500 SF

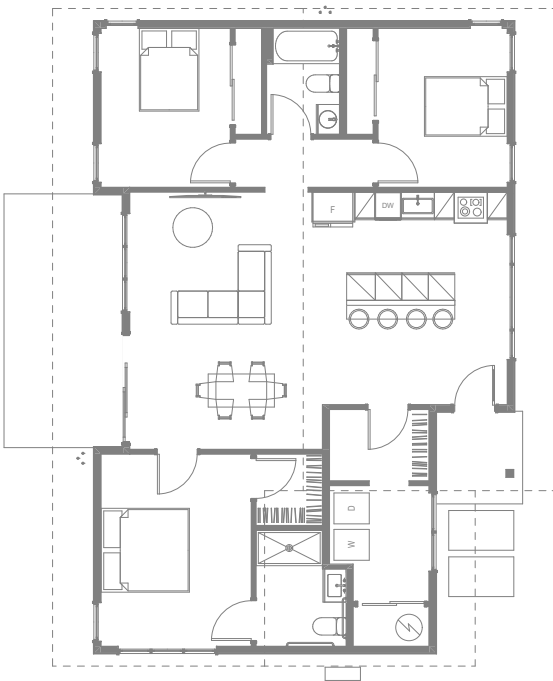


SPECIFICATIONS

‘Ōiwinani takes its name from “a beautiful, familiar form,” and that idea guides the home’s design from the inside out. The layout is organized around balance and recognizability, creating a structure that feels dependable and easy to understand rather than novel or complex.

Living areas are positioned to naturally draw the household together, while bedrooms are evenly sized and placed to support fairness, flexibility, and long-term use. Space is used efficiently, but not tightly, allowing the home to feel settled and intuitive without wasted square footage.

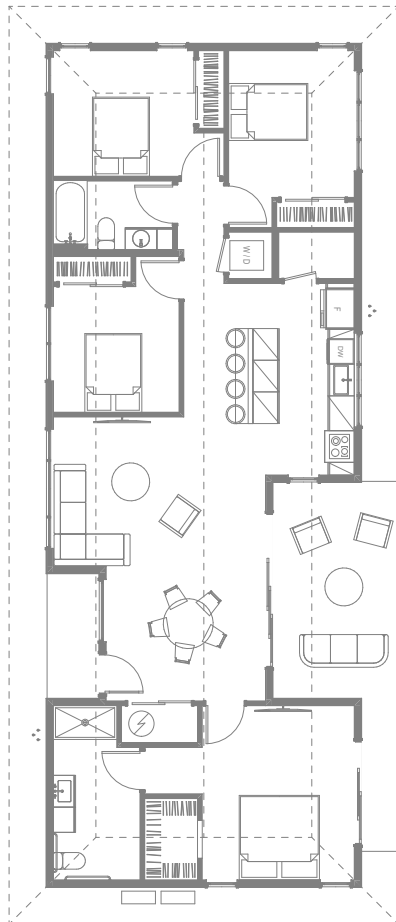
At 3 bedrooms and 2 baths, ‘Ōiwinani is well suited for families seeking a classic, reliable home that performs day after day.



LUALA'I

Luala'i "the peace that comes from living in comfort and ease."

4BR - 2BA - 1200-1500 SF



SPECIFICATIONS

Luala'i is shaped by the idea of comfort and ease, a home where daily life settles into a steady, peaceful rhythm. Its name reflects the sense of calm that comes from a layout designed to separate activity from rest without feeling confined.

The long, narrow form organizes the home into two clear zones. Private bedrooms are arranged along one side to create a protective, quiet edge, while living and open-view spaces line the other, allowing light, airflow, and outlook to define the home's shared areas. This deliberate division supports both privacy and connection.

With four bedrooms and two baths, LuaLa'i offers generous space for family life while maintaining order and simplicity.



MĀHIE

Māhie “Delightful, charming, pleasant, handsome.”

2BR - 2BA – 1500–1700 SF

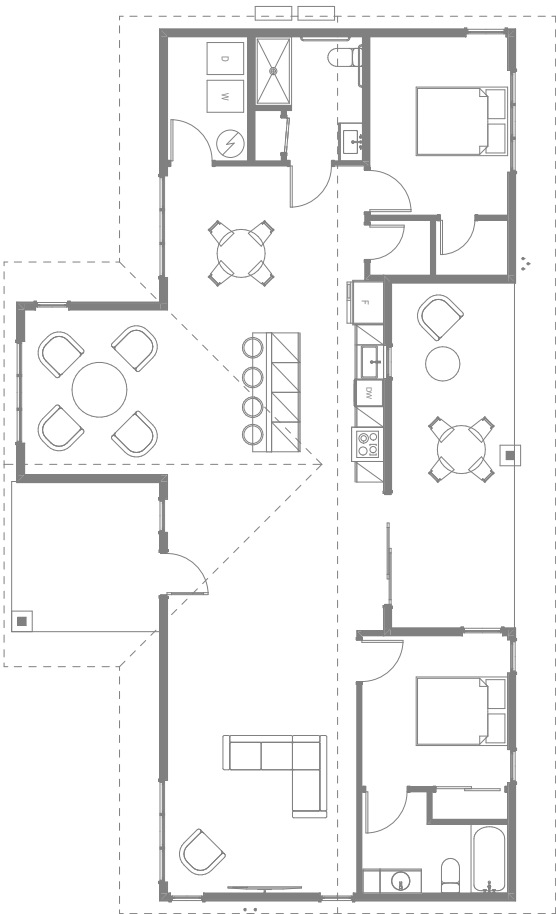


SPECIFICATIONS

Māhie takes its name from delight and charm, a fitting description for a home designed around shared experience. This 2-bedroom plan with a larger footprint allows it to devote more space to living and gathering than to private retreat, creating a layout that feels open, welcoming, and naturally social.

The home’s central living areas are intentionally generous, giving daily life room to unfold comfortably and making Māhie well suited for hosting, extended family visits, or simply spending time together.

It is a home whose appeal comes from openness, warmth, and the simple pleasure of being together in Lahaina.



LUALA'ILUA

3BR - 2BA – 1500–1700 SF

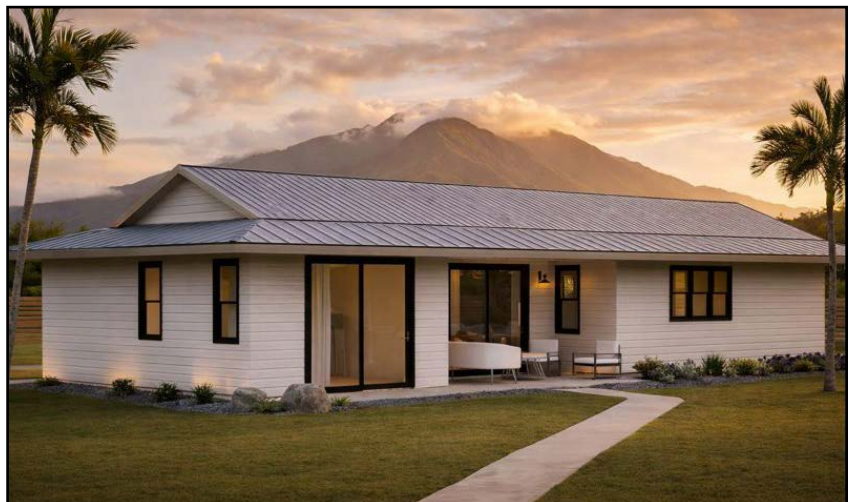
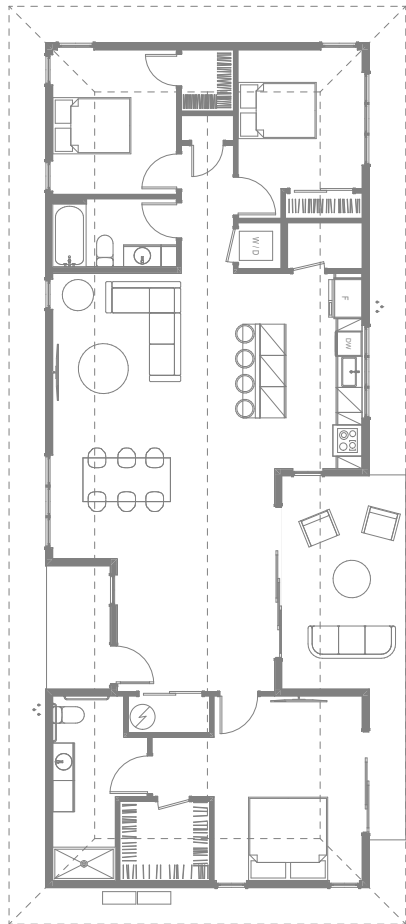
Luala'i + lua ("extended," "twice," "to lengthen") "the extended peace."



SPECIFICATIONS

Luala'ilua builds on the calm order of its smaller counterpart by extending it. The name, meaning "the extended peace," reflects a longer, more generous expression of the same linear idea, allowing the home to stretch comfortably across the site without losing its sense of balance.

Private spaces and open, view-oriented areas are arranged in a deliberate row, reinforcing separation while maintaining continuity. By lengthening this organization, the plan supports a larger household without introducing complexity or visual noise. At 3 bedrooms and 2 baths, Lua'ila offers added capacity while preserving the quiet, composed character that defines the design.



KAHE'OLU

4BR - 2BA – 1500–1700 SF

*Kahe (to flow) + 'olu (pleasant, comfortable, cool) "pleasant flow,"
"cool, refreshing flow."*

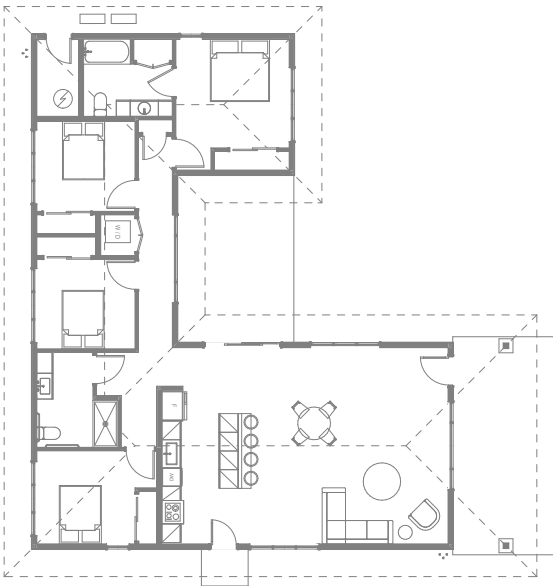


SPECIFICATIONS

Kahe'olu is organized around movement and comfort, with a U-shaped layout that naturally creates a central courtyard. This outdoor core becomes the heart of the home, where daily activity, gathering, and circulation flow easily between interior and exterior spaces.

The name, meaning "pleasant" or "cool flow," reflects how the plan encourages air, light, and people to move comfortably through the home. Living areas open toward the courtyard, reinforcing a sense of connection and ease, while bedrooms are arranged to maintain privacy without breaking that flow.

With four bedrooms and two baths, Kahe'olu supports active households that value shared space and everyday comfort.



LEWALANI

2BR - 2BA – 1700–2000 SF

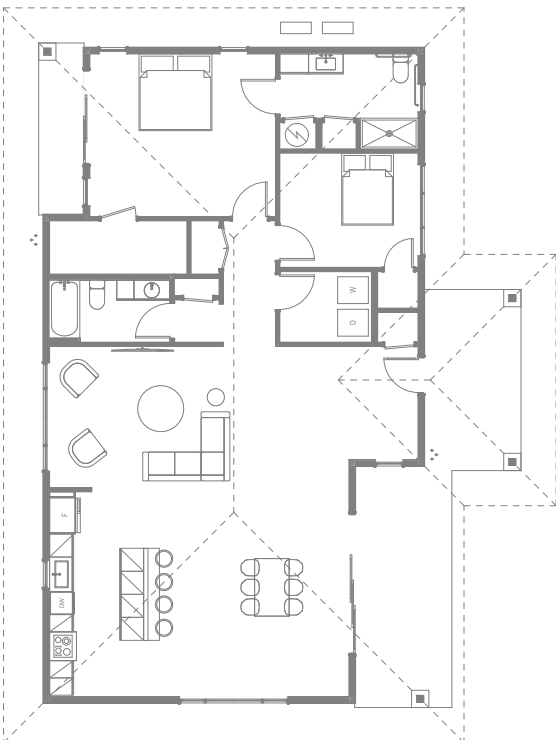
Lewalani “the region of the heavens; a lofty space in the sky; an expanse belonging to what is above.”



SPECIFICATIONS

Lewalani is a thoughtfully designed 2-bedroom, 2-bath home that balances openness, resilience, and long-term livability. True to its name meaning “the region of the heavens,” Lewalani is defined by a generous entry sequence and a bright, airy interior that creates a sense of height and openness uncommon in homes of this size.

Large windows and a smartly organized floor plan make the most of each square foot, delivering breathable living spaces well suited for couples, kūpuna, small families, or homeowners planning for future ADUs or garages. Built with durable, low-maintenance materials, Lewalani offers peace of mind, lower operating costs, and flexibility as household needs evolve.



KA'APEHA

Ka'apeha "impressively big, large in a distinguished manner; influential and important."

3BR - 2BA - 1700-2000 SF

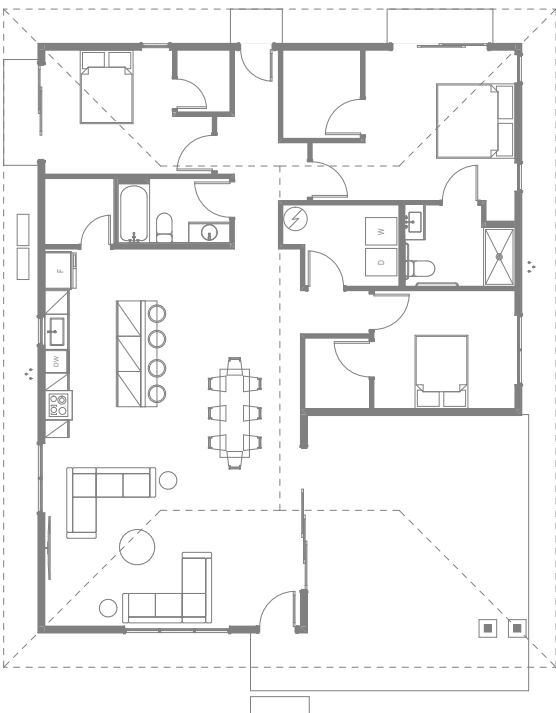


SPECIFICATIONS

Ka'apeha stands out for its presence. As the tallest and most visually commanding home in the collection, it carries a sense of stature that is immediately recognizable.

That sense of distinction comes from large interior volumes and a vertical expression that gives the home weight and importance without feeling imposing. The name Ka'apeha, meaning "impressively big" and "distinguished," reflects this balance of scale and restraint, where size is used to create clarity and confidence rather than excess.

Ka'apeha is well suited for households that value space, light, and a strong architectural identity. It is a home that feels substantial, lasting, and confident.



KAHE‘OLULOA

4BR - 2BA – 1700–2000 SF

Kahe (to flow) + ‘olu (pleasant) + loa (long, extended) “a long, pleasant flow,” “extended refreshing flow.”



SPECIFICATIONS

Kahe‘oluloa extends the idea of movement and comfort across a broader footprint. Its name, meaning “a long, pleasant flow,” reflects a home designed to stretch activity, light, and connection across an expanded layout.

By lengthening the U/H-shaped form, the plan increases separation between wings while enlarging the shared courtyard space that links them. Circulation unfolds gradually through the home, reinforcing a sense of openness and continuity rather than abrupt transitions.

Kahe‘oluloa supports larger households while preserving the calm, refreshing character of the original concept.

